

Discover Annex: Transforming Modern Building Management

The modern era of building management goes beyond mere occupancy. It's a realm where environmental impact and operational efficiency take centre stage. The commercial real estate sector, employing over 18 million dedicated professionals, is now driven by a collective mission to reduce carbon footprint and minimize operational costs.

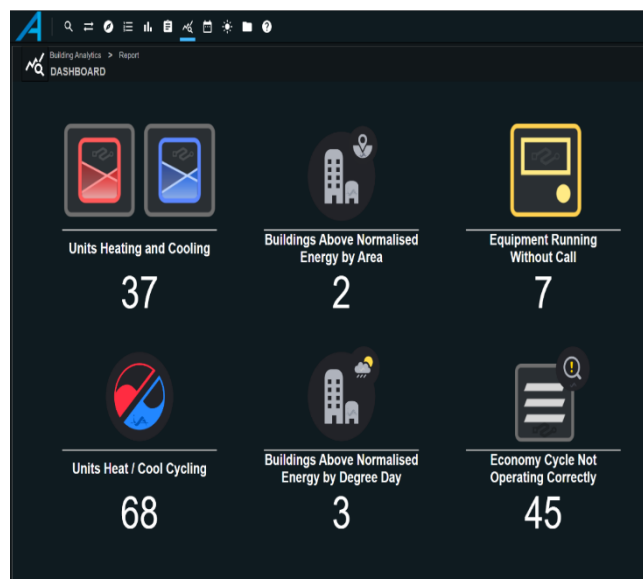
Technology is rapidly reshaping our lives, and building technology is no exception. Less than 15 years ago, connecting to a Building Automation System remotely was groundbreaking. Facility Managers were liberated from the necessity of being on-site, gaining the ability to operate systems and diagnose issues with HVAC units outside of regular working hours. Today, technology has evolved, allowing buildings to analyse themselves, proactively detecting performance issues before they escalate. They pinpoint root causes and, based on criticality, initiate maintenance tasks, notify relevant personnel, or even autonomously raise after-hours work orders for immediate remediation through the work order management system.

Renowned management guru Peter Drucker once said, "You can't improve what you don't measure." This holds especially true within buildings, where countless data points are continuously measured and controlled. However, data, without context, remains mere numbers. Moreover, when data is scattered across disparate systems in vast quantities, manual processing becomes an insurmountable challenge – leaving data unexploited.

At Edge Semantics, we understand the complex and multifaceted challenges faced by today's building operators and managers. The sheer volume of data generated within modern facilities can be overwhelming, leading to inefficiencies, increased operational costs, and missed opportunities for delivering new revenue streams and optimization.

Introducing Annex: Unlocking the Future of Building Management

Annex is an avant-garde platform engineered on Semantic Web technology. It harnesses linked data, ontologies, and semantic reasoning to unify and simplify management of your building's data. With Annex, your data isn't merely collected; it's comprehensively interpreted to unearth actionable insights.

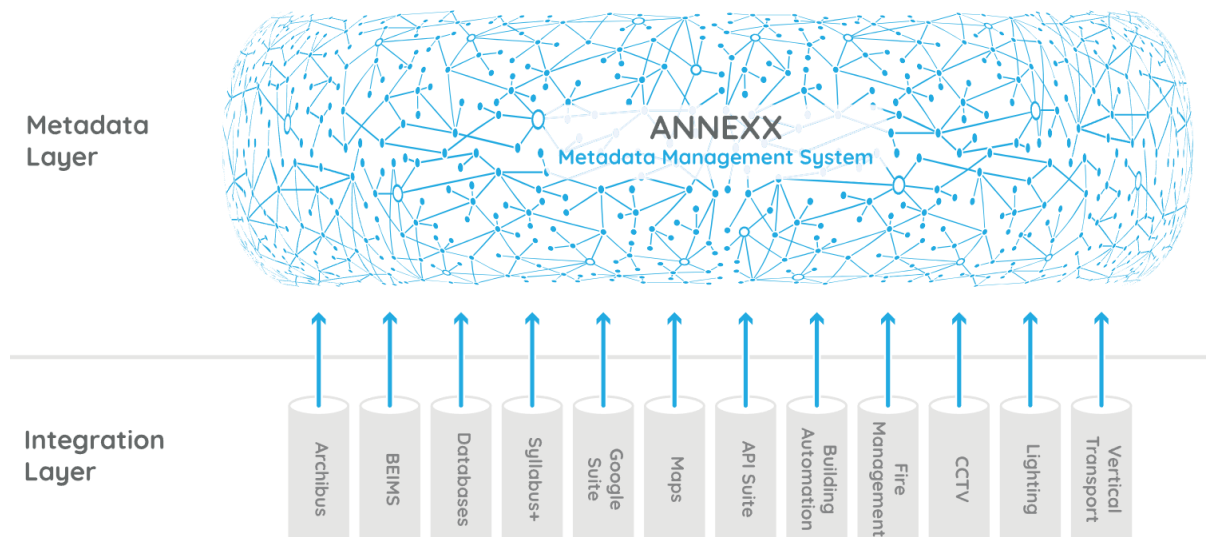


Example Annex Dashboard

Annex offers automated analysis and workflow management by unifying all building operating systems and technology into a single, accessible data repository, regardless of their proprietary or disparate nature. This transformation enables endless possibilities to enhance the operation, management, and performance of your buildings.

The Power of Annex: Building Complex Insights from Existing Data

Annex's strength lies in its ability to integrate data from existing systems and establish connections to construct a sophisticated data model of your building, campus, or portfolio. No more jumping between different software applications or struggling with incompatible data formats. Annex harmonizes all your data sources, creating a standardized foundation for comprehensive analysis and decision-making.



But why should you care about this remarkable feat? In essence, it liberates you from the tedious task of mining data for hours on end to create bespoke solutions tailored to specific, soon to be superseded, information. Simply put, it enhances your financial returns while simultaneously improving comfort and energy efficiency.

With Annex, you're not just managing buildings; you're shaping the future of modern building management. Welcome to a new era of efficiency, sustainability, and unparalleled insights.

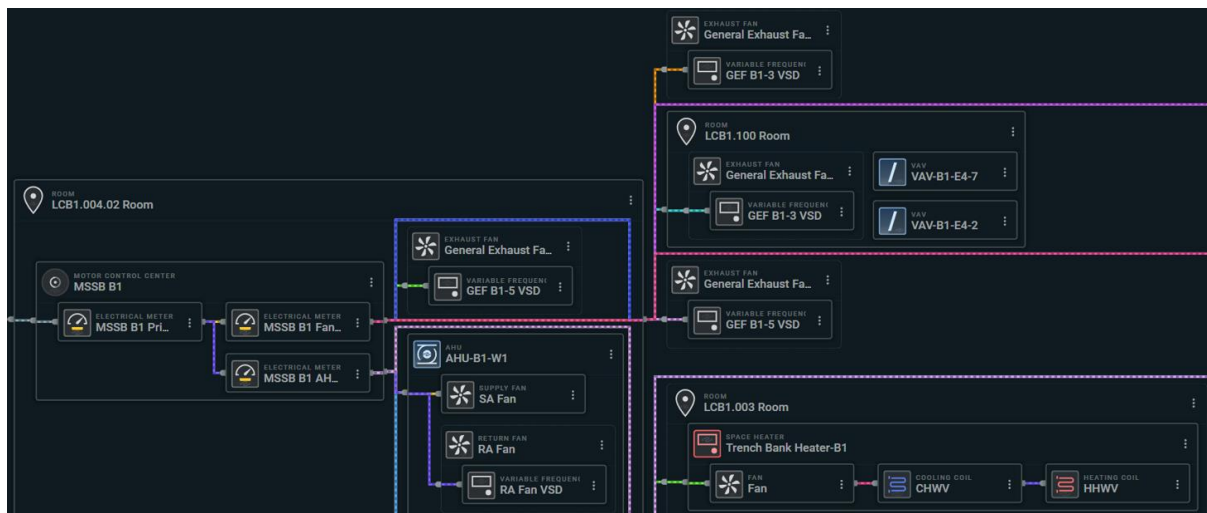
Unlock the Future of Energy Management with Annex

In an era where the quest for carbon-neutral buildings has never been more critical, the imperative to measure, optimize, benchmark, and reduce energy consumption has never been more pronounced. Thankfully, many buildings are equipped with power meters and smart devices. However, the challenge often lies in the unavailability of consumption data within a single system and the absence of updated metering hierarchies, often compounded by missing or outdated single line diagrams. This is where Annex steps in, illuminating a new path forward.

Revealing the Power of Annex in Energy Management

Annex presents a real-time digital Single Line Diagram, showcasing all energy measuring devices, from power meters to Chillers and Variable Speed Drives. It empowers you to explore their data and interrogate their performance.

Moreover, Annex establishes meaningful relationships between energy consumption and your building's plant, equipment, and spaces. This enables in-depth analysis of usage trends, the creation of baseline consumption, and the identification of excessive power consumption and its root cause.



Dynamically created single line diagram

What does Annex enable?

By integrating diverse data sources and capitalizing on the interconnections among assets, Annex offers a plethora of opportunities to unearth hidden insights, optimize precious resources, and reduce costs.

Single Pane of Glass: Say goodbye to the complexity of managing multiple interfaces for various building systems. Annexx offers a single, intuitive user interface that provides access to all connected data. This streamlines the user experience, reducing training time and ensuring that you have quick access to the information you need.

Dynamic Visualization: Annexx redefines how you interact with building data. Unlike traditional systems with fixed-data webpages, Annexx automatically creates visualizations based on your queries. This means that you can explore data in real-time, generating dynamic visual representations of your building's performance metrics. No more reliance on static reports; Annexx empowers you to uncover insights as they happen.

Advanced Live Data Search Engine: Annexx features an advanced live data search engine with relationship filtering. This means you can dig deep into your data with ease, searching for specific information or exploring the intricate relationships between different building systems. Annexx's search capabilities empower you to find answers quickly and make informed decisions.

Here are some examples of what you can achieve with Annexx:

- Make informed energy optimization decisions by leveraging meters with tagged relationships for all upstream and downstream devices.
- Automate intelligent operational controls, such as adjusting HVAC based on room booking status.
- Establish baselines for your buildings to detect outliers, providing valuable insights for operational or Capex decisions.
- Identify devices operating on manual override.
- Create an energy baseline and measure improvements for Carbon Neutral initiatives.
- Craft a dynamic digital twin of your building, visually representing all tagged devices, and overlaying live device statuses and sensor data.
- Dynamically generate single line diagrams.
- Enable predictive maintenance to prevent costly downtime and extend the lifespan of equipment.

To delve deeper into the possibilities and capabilities of Annexx in creating intelligent, efficient buildings, don't hesitate to get in touch with us at info@edgesemantics.com. Together, we can shape a more sustainable, cost-effective, and energy-efficient future for your building portfolio.